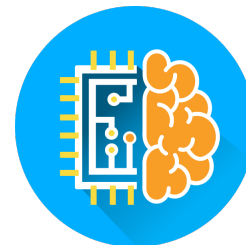


The New Healthcare.AI Expert Services, Levels 2–5

Transformative expert services that dramatically broaden the effective use and use cases for AI in your organization



Type: Technology Services

ID: 3838

Revised: 2021-Feb-22

The new Healthcare.AI™ Expert Services by Health Catalyst help healthcare systems expand the use and use cases of AI (augmented intelligence) across the organization. The team provides expert guidance to:

- Choose, tailor, or build predictive models
- Implement retrospective comparisons or prescriptive optimization for system-wide improvement
- Expand your data science talent

Intended Users

- Chief information officers
- Chief medical information officers
- Chief analytics officers

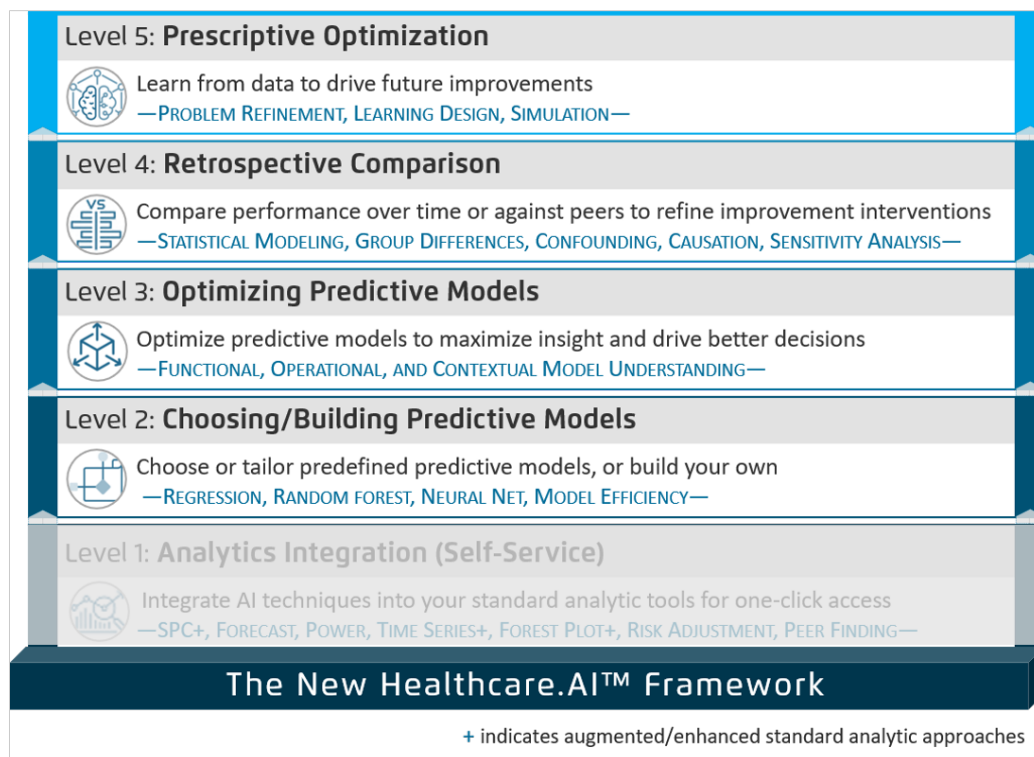
Success stories

For examples of how customers have used Health Catalyst products and services to improve outcomes, see our [success stories at healthcatalyst.com](https://www.healthcatalyst.com/success-stories)

Contact us

For more information on how Health Catalyst products and services can help your organization, please contact us:

- Reach out to your sales representative
- Call us at (855) 309-6800
- Email us at info@healthcatalyst.com



The problem

Healthcare organizations often limit the potential impact of AI by narrowly focusing on predictive analytics. While predictive modeling is an important use case, there are many more opportunities to engage AI to support business-critical decisions. By focusing exclusively on predictive analytics, organizations significantly limit the business impact of AI.

In addition, many organizations find it challenging to bring data science expertise into their organizations:

- They cannot afford to fund data science resources.
- They have data science talent but struggle to scale their expertise to broader analytics teams.
- They attempt to teach data science concepts and skills to their existing workforce but find that results are slow, expensive, or difficult to achieve and sustain.

Other organizations have begun to integrate AI tools or talent into their analytic disciplines but have been unable to demonstrate the value of these efforts. Typical AI software produces answers that can be challenging to validate, modify, or optimize. This makes it difficult to know if AI is working or how to adjust to make it work better.

Our approach

Our Healthcare.AI Expert Services help significantly expand the use cases for advanced AI—and improve your success rates. We provide expert data scientists to help you select the right predictive models and expand the use of AI to retrospective comparison and prescriptive optimization. In addition, our teams can work directly with your teams to supplement the talent you already have.

Benefits and features

- **Help you choose, build, or optimize predictive models (Levels 2, 3).** Our experts start with hundreds of pre-defined predictive models from which to choose, then guide the optimal predictive model for your situation. Finally, we help you validate the predictive model and optimize its impact within your organization.
- **Expand AI use cases beyond predictive analytics—to retrospective comparison and prescriptive optimization (Levels 4, 5).** Our experts help you identify and use AI for a wider variety of use cases and advanced business decision-making situations. We use retrospective comparisons for system-wide improvement optimization and prescriptive optimization to plan for your most efficient and effective go-forward improvement projects.
- **Start , expand, guide, or supplement your data science talent.** We provide expert healthcare data science talent. We can help you with the right level of guidance—from supporting a “light touch” data science project to embedding our data scientists to help you with longer-term efforts.

This document provides an overview of the technology that is offered by Health Catalyst. We are continuously improving our Technology and reserve the right to make changes in the features shown herein or to discontinue any technology at any time without notice or obligation. Some technology may not be available for deployment based on product status or because it was not included in your Order Forms.