

# Stroke - Acute Ischemic & Transient Ischemic Attacks (TIAs)

Supports best-practice care for stroke—and your organization’s ability to save lives and reduce long-term disability



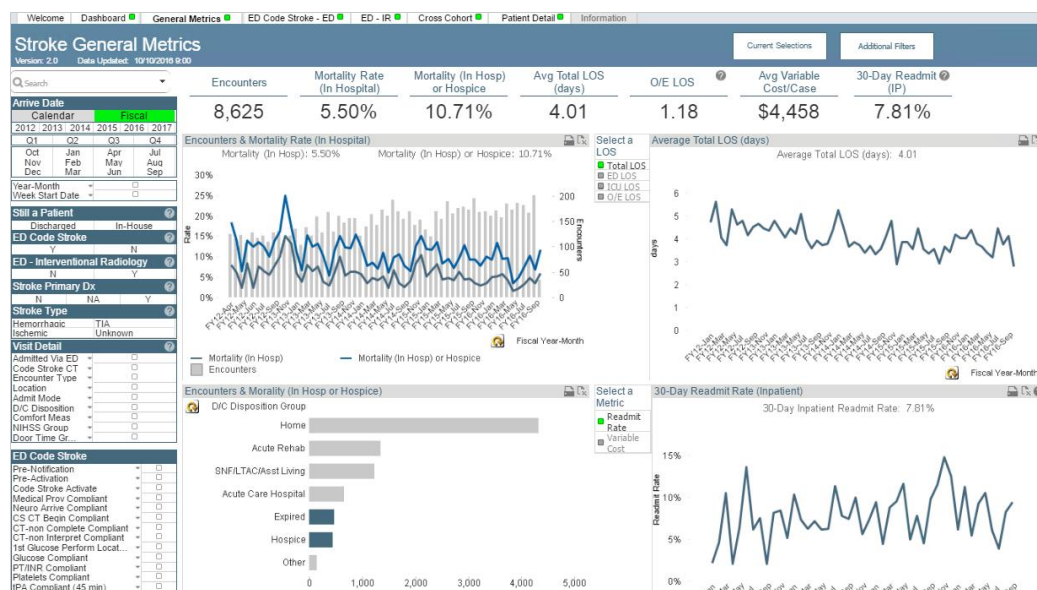
Type: Analytics Accelerator

ID: 1496

Revised: 2019-08-28

The **Stroke - Acute Ischemic & TIAs** analytics accelerator provides insight into the delivery of care for stroke and TIAs —supporting organizations in their efforts to reduce mortality, morbidity, length of stay, readmission, and cost of care.

**Note:** Like all analytics accelerators, this application is implemented in a custom way. Organizations identify their own areas of focus—and the appearance and functionality of the accelerator may differ from what is presented here.



The Stroke accelerator delivers insight for quality and cost improvement.

## The problem

- **Mortality and morbidity are high.** Stroke is the third leading cause of death in the United States—and the leading cause of serious, long-term disability.
- **Associated costs are high.** Stroke costs—including healthcare services, medications, and missed work days—total approximately \$34 billion each year in the United States. By 2030, total direct medical stroke-related costs are projected to triple from \$71.6 billion to \$184.1 billion.
- **Stroke systems of care improve outcomes .** Multitiered systems of care for stroke patients have emerged as an effective model for improving clinical outcomes and reducing costs of care. Stroke systems of care address the entire care continuum—from prehospital recognition and EMS transport, hospital treatment and discharge, to rehabilitation and long-term/palliative care.

## Intended users

- Stroke Program Coordinator
- Clinical directors
- Operational directors
- Clinical educators
- Service-line leadership and improvement teams
- Unit-level leadership and improvement teams

## Potential data sources

- EMR - Clinical
- Patient Satisfaction
- Finance/Costing
- As available: EMS data, health-related quality of life (HRQOL) data

## Key measures

- Mortality
- LOS
- Complications
- Readmissions
- Recurrences
- Health-related quality of life (HRQOL)
- Cost

## Our approach

The Stroke analytic accelerator supports a coordinated and evidence-based approach to assessment, care, and follow-up, helping drive and sustain improvement in clinical and financial outcomes. Typical implementations focus on stroke systems of care and prehospital management, initial hospital assessment and intervention, optimized hospital care, patient education, and transitions of care.

## Benefits and features

- **Access an at-a-glance, near real-time view of quality of care and its impact.** The application dashboard visualizes outcome and process metrics in easy-to-consume, one-page summaries.
- **Focus your team on what matters most.** Outcome metrics typically include mortality, LOS, complication and readmission rate, healthcare-related quality of life (HRQOL), recurrence or TIA-conversion rate, and cost per case. Typical process metrics include time to assessment and intervention, adherence to stroke order set, provision of standard education, etc. The result? Your team understands the priorities and can help solve problems that stand in the way of improvement .
- **Do more than monitor: understand.** Detailed analytics of important processes provide dynamic data exploration, real-time filtering, and drill-down to patient-level detail. The application also provides export or print capability for patient list, metric performance, etc. so you can share and follow up.
- **Compare care within a cohort.** A Compare tab lets you review patient and care variables—demographics, variation in care, performance in different units, etc.—to determine what's working and not working to improve outcomes. This feature also allows you to gauge the ROI of improvement work in particular areas: what could you achieve if every unit and provider standardized to match your best performance?

## Use cases

- **The physician champion** for stroke improvement work uses the application to easily monitor the status of new processes, share outcomes with leadership, and support peer-to-peer discussions and education.
- **A stroke coordinator/nurse manager** in a large hospital system observes that complications and mortality have been creeping upward over the previous three quarters. What are the drivers of this trend? Which aspect of the care protocol is proving most problematic for front-line staff? He uses the Stroke Analytic Accelerator to explore performance and guide a plan to intervene.
- **A clinical educator** accesses the application to identify units and clinicians that need additional support to adhere to established patient education requirements.

## Success stories

For examples of how customers have used Health Catalyst products and services to improve outcomes, visit

<https://www.healthcatalyst.com/knowledge-center/success-stories/>

## Contact us

For more information on how Health Catalyst products and services can help your organization, please contact us:

- Reach out to your sales representative
- Call us at (855) 309-6800
- Email us at [info@healthcatalyst.com](mailto:info@healthcatalyst.com)

This document provides an overview of technology that is offered by Health Catalyst. We are continuously improving our Technology and we reserve the right to make changes in specifications and features shown herein, or to discontinue any Technology described herein at any time without notice or obligation. Some technology may not be available for deployment based on current product status or may not be available to you because it was not included in your Order Forms.